

Developer  
Nishad Panchal

# THE EPITOME OF luxurious living

Luxurious Weekend Villa At An Exclusive Location



## 1 & 2.5 Bhk Blissful Living

**Project By**  
Shilaavinyaas Architecture  
Ar. Himani Panchal  
Architect & Phd In Vastushastra

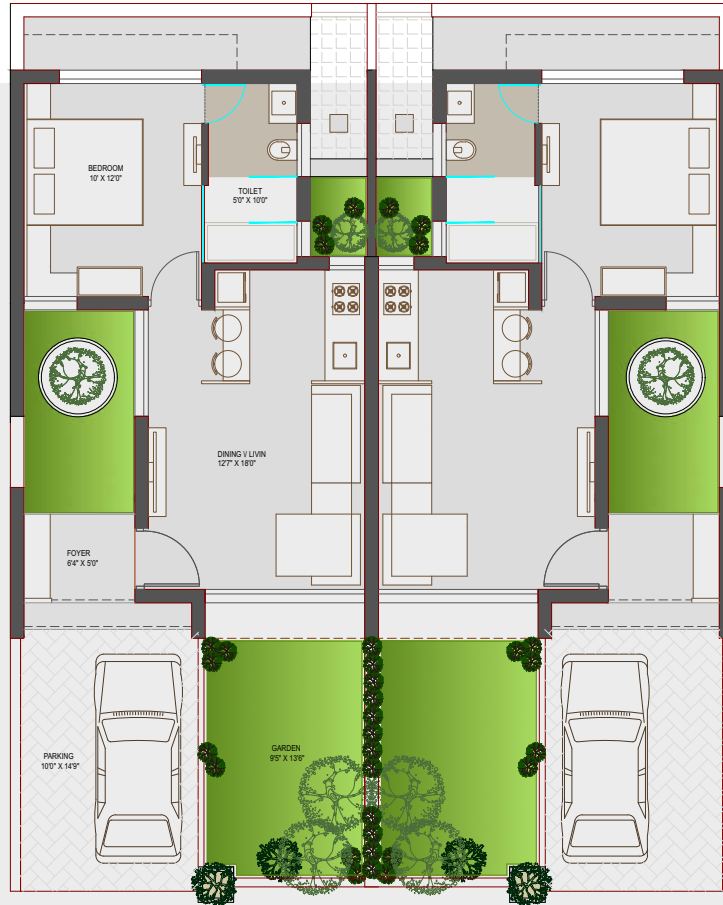
Near Rajgadhh Palace Resort,  
Dhaniyana Road, Ambetha,  
Palanpur, Banaskantha, Gujarat. 385001.  
☎ +91 85119 90099



Scan For Location



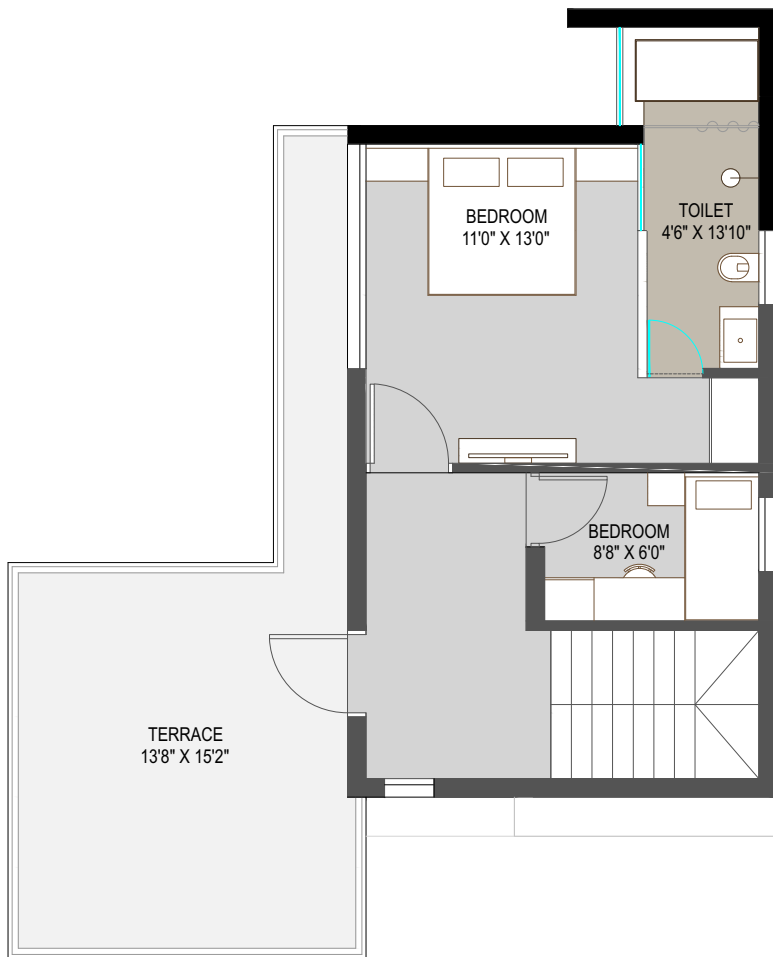
# 1 BHK



# 2.5 BHK



Ground Floor



“  
Indulge in **luxury**  
**Like Never**  
Before

## First Floor

## Common Swimming Pool





Attractive Gate



Club House



Security Cabin



CCTV Camera



Street Lights



Indoor Games



Private Garden



Garden



swimming pool



Gymnasium



24x7 Water Supply



C.C.Road

## Amenities

PROJECTOR, AIR CONDITIONER, REFRIGERATOR, TELEVISION, HOME THEATRE SPEAKER, MOTORIZED CURTAINS, CARD DOOR LOCK SYSTEM, DIGITAL OPERATING LIGHTS & FAN, DINING TABLE, SOFA, FURNITURE, SWING, DECORATIVE PLANTS, WALL MOUNTED IRONING, CCTV CAMERA, SMOKE DETECTOR, LUXURIOUS BATHROOM AND MORE...

# SPECIFICATIONS

## PARKING



Parking Area Paved With Designer Tiles / Block / Kotah Stone

## WALLS



Exposed Brick Texture , Exposed Concrete Finish Walls & Quality Paint.

## FLOORING



Decorative Flooring As Per Architect's Design

## KITCHEN



Modular Kitchen.  
Branded Pvc Fitting , Isi Quality Marked Sanitary Fitting.

## DOORS & WINDOWS



Decorative Wooden Doors.  
Windows Will Be Aluminium Framed, Powder Coated.

## PLUMBING



Concealed Plumbing With High Standard Pipe Fitting And With, Cp Fittings.

## TERRACE



China - Mosaic Flooring For Heat Reflection.

## ELECTRIFICATION



3 - Phase Concealed Copper Flexible Wiring Branded Modular Switches In All Rooms.tv & Telephone Points , Ac Points In All Rooms.

## TOILETS



Designer Tiles.  
Shower Facility In Every Toilet

## Notes:

- Stamp Duty, Registration charges, Legal charges, Service tax, VAT, Panchayat charges & Electricity Company charges (including sub-station & cable) and any additional charges or duties levied by the Government / Local authorities during or after the completion of the project shall be payable extra by the purchaser / member / unit holder as applicable.  
Society Maintenance Deposit & Maintenance Charges will be payable extra by each member/purchaser/unit-holder as applicable.
- In the interest of continual development in design & quality of construction, the Developers reserve all rights to make any changes to the project including technical specifications, designs, planning, layout and these changes shall be binding to all purchasers/ members/unit holders.
- Changes/alternation of any nature, by the purchaser/member/unit holder, including the elevations, exterior colour scheme of the project or any other change affecting the overall design concept & outlook of the project, are strictly NOT PERMITTED during or after the completion of the project.
- Furniture & fixtures shown in the images of the brochure are just for presentation and are not offered with the project. This brochure is intended only for easy display and information of the project and does not form part of legal document.
- The Developers reserve all the rights to design, construct & sell any additional area, units, apartments and/or floors in case of any increase in permissible FSI or Built-Up area by the Competent Authority, at any times during or after completion of the project and the same shall be binding to all unit holders/members/purchasers and the project as a whole.